

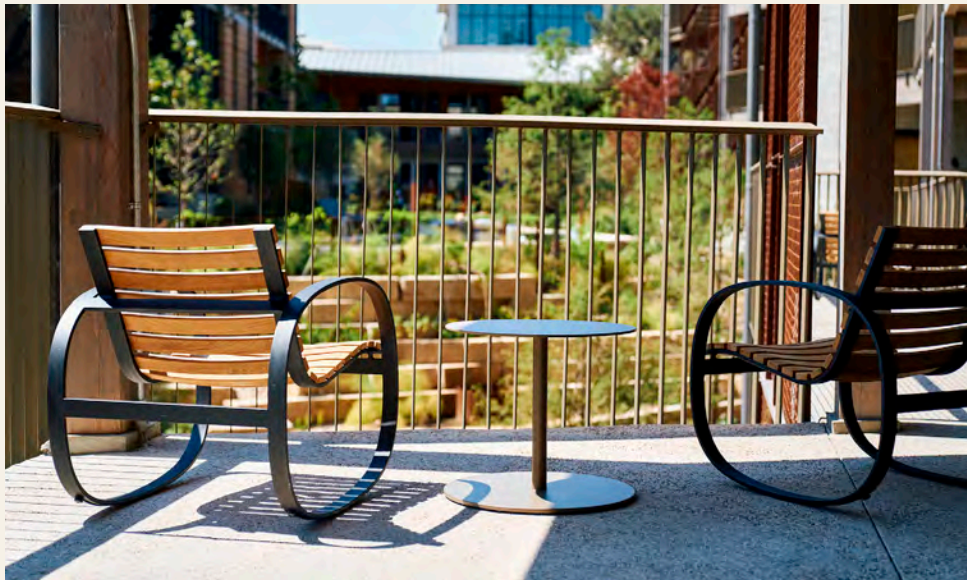


# LIFE GATHERS AROUND WATER IN TEXAS

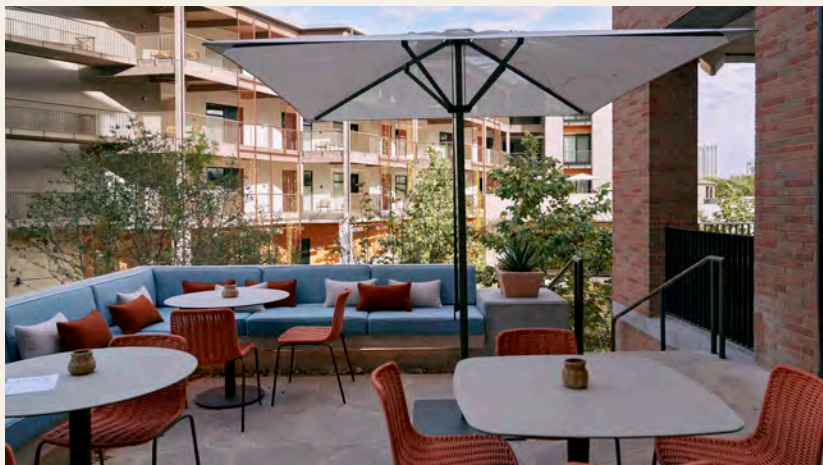


## HOTEL MAGDALENA HONORS OUR SPRING-FED CULTURE AND THE COMMUNITY THAT GROWS NEAR IT

Situated amongst rolling grounds and natural beauty inspired by Texas, the 89-room hotel's design pays homage to the local lake house ethos of the early 1970s. Hotel Magdalena is also home to a restaurant, poolside bar, and several other spaces for hosting events and hanging out. Situated on Music Lane in the South Congress neighborhood amidst Austin's most vibrant culture and history, Hotel Magdalena overlooks downtown and the Capitol.



In the mid-1950s and 1960s, the Terrace Motor Hotel sat at the same location as the Hotel Magdalena and the Hotel Saint Cecilia. As one of Austin's premier mid-century motor lodges, it boasted over 300 rooms and the ritzy Summer House, a pool-side restaurant with music in the lounge. The former restaurant serves as inspiration for the current Summer House on Music Lane both in menu and design, as evidenced by its douglas fir, open-grid ceiling structure and outdoor feel.



## MEETINGS & EVENTS

Hotel Magdalena offers a unique venue deep in the heart of South Congress, perfect for corporate meetings, wedding ceremonies, receptions, or special events of any kind. Have a relaxed gathering on the open-air patio of the Terrace Suite or enjoy the versatility of our Event Space, whose sliding glass doors open onto a spacious outdoor lawn.

### MAGDALENA EVENT SPECS



#### BOBBIE NELSON ROOM + LAWN

- 1,500 square feet of flexible indoor space
- 2,500 square feet of outdoor lawn space
- Capacity: 150 Reception | 85 Seated



#### MAGDALENA BAR

- 2,500 square feet of outdoor space
- Capacity: 40 Reception | 25 Seated



#### TERRACE SUITE

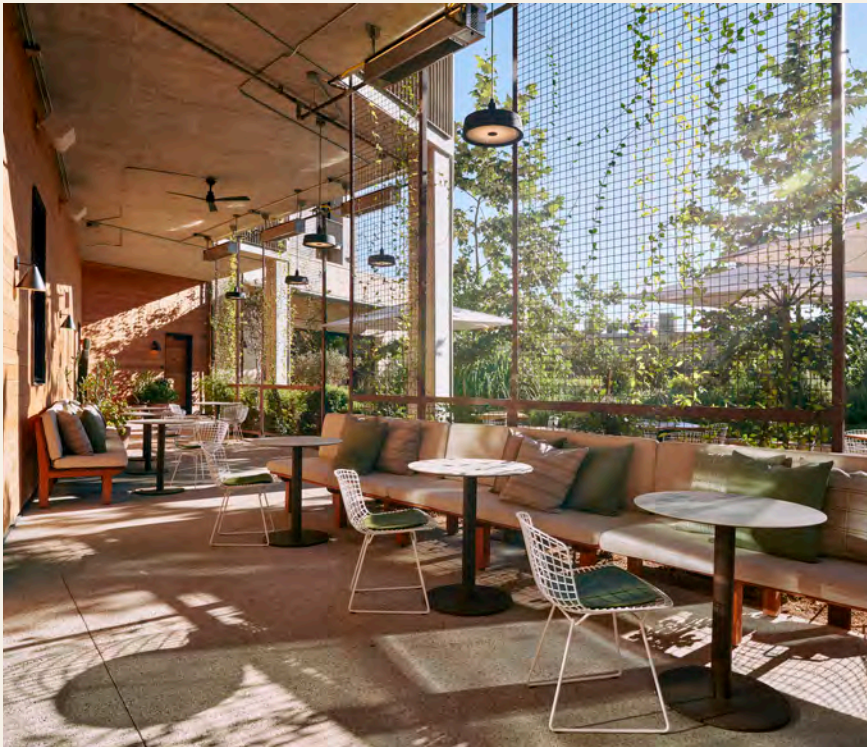
- 700 square feet of indoor space
- 600 square feet of outdoor space
- Capacity: 12 Boardroom | 20 Reception | 15 Seated

## MEETINGS & EVENTS *(continued)*

### EXCLUSIVE EVENT SPACE ACCESS

- Private usage of Summer House on Music Lane, Bobbie Nelson Room + Lawn
- Capacity: 200 (standing)

Summer House on Music Lane offers catering for all styles of events. Ask about our options.





## MEETINGS & EVENTS (continued)

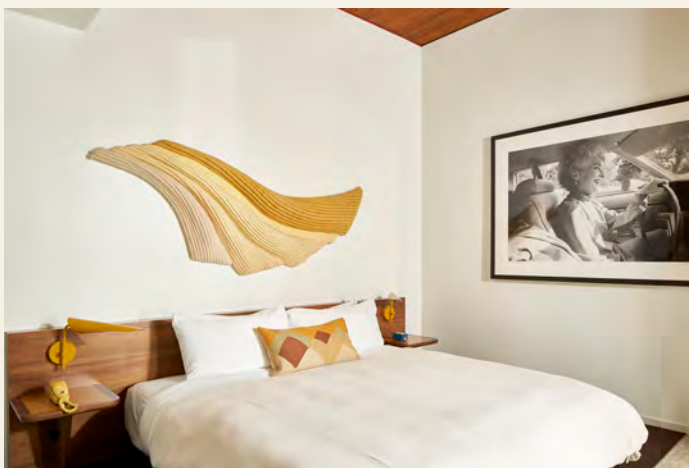
### A/V Pricing:

- Sound patch via house speakers - \$150
- Portable Bluetooth speaker - \$75
- Projector package - \$495
  - includes necessary cords & light setup assistance*
- Handheld microphone (2 available) - \$75
- Lavalier microphone (2 available) - \$75



### In-house inventory:

- (4) Cocktail Tables
- (1) Satellite Bar
- (15) 60" round banquet tables
- (11) 8x30 tables
- (120) blue banquet chairs
- White plateware
- Bar glassware
- Flatware



## ROOM OFFERINGS

Each of the hotel's 89-rooms features windows at both ends maximizing breezy feelings and natural light at sunrise and sunset. Poured concrete with exposed aggregate draws inspiration from the river rocks of Texas, while custom walnut wood built-in beds and desks and Sferra bed linens make for ideal work and rest. The hotel rooms feature desk inlays, Santa & Cole lamps, and Spanish tile in four colorways - red, blue, yellow, or green.

### ROOM TYPES

- Studio (ADA available) - 310 sq. ft.
- Porch Studio - 330 sq. ft.
- Treehouse Studio (ADA available) - 330 sq. ft.
- Music Lane Queen (ADA available) - 380 sq. ft.
- Sunset Suite - 385 sq. ft. with a 65 sq. ft. screened-in balcony
- Spring Suite (ADA available) - 450 sq. ft. with private porch
- Terrace Suite- 700 sq. ft. + 600 sq. ft. of outdoor space

# PROGRAMMING & EXPERIENCES



In keeping with Bunkhouse's ethos of creating community-driven experiences, Hotel Magdalena pays homage to an Austin of decades past through musical, wellness and social offerings. Ask about our activities offerings.



# PROGRAMMING & EXPERIENCES

Sips on the Green - 2023



## PLANNING AND COORDINATION:

Maxwell and Gray Events + Design | @maxwellandgray

## FLORAL:

The Flowered Blue | @thefloweredblue

## SIGNAGE + PAPER DESIGN:

East Rose Studio | @eastrogestudio

## MUSIC:

Texas Sun Music | @texassunmusic

## PHOTOGRAPHY:

HER Photography | @hopeherphotography

## RENTALS (TABLES, LINENS + PIPE AND DRAPE):

Marquee Event Rentals | @marquee\_rents

## RENTALS (LOUNGE, BAR, AND PEG BOARD):

Bee Lavish Event Rentals | @beelavishvintage

## MINI GOLF EXPERIENCE:

Austin Putt Putt Rentals | @austinputtputt

## DESSERT CART:

Dallas Dessert Cart | @dallasdessertcart







## EQUIPMENT ROOM

Tucked away just off of South Congress on the storied Music Lane, Equipment Room is a high-fidelity vinyl bar located in the basement of Hotel Magdalena. A nostalgic love letter to intentionality, Equipment Room is a modern sanctuary where patrons are invited to surrender themselves to the revelatory experience of hearing a record the way it was intended.

Inspired by famed Tokyo hideaways and the intimate tradition of a Japanese kissa, Equipment Room brings a uniquely Texas sensibility to the high-fidelity vinyl concept, with every detail from the record collection to the sound equipment and the cocktails devoted to the art of appreciation, highlighting subtlety and nuance.



## OUR NEIGHBORHOOD

Explore our local favorites, all less than a mile away, which are perfect for team building and creating lasting connections.

### **JUNE'S ALL DAY (0.5 MILES WALKING DISTANCE)**

The ideal neighborhood wine bar and cafe.  
1722 S Congress Ave.

### **HOME SLICE PIZZA (0.3 MILES)**

All-day and late-night slices.  
1415 S Congress Ave.

### **MAGNOLIA CAFE (0.6 MILES)**

Austin institution serving breakfast, Tex-Mex & veggie options.  
1920 S Congress Ave.

### **JO'S COFFEE (0.2 MILES)**

Coffee and tacos that we love so much.  
1300 S Congress Ave.

### **TINY GROCER (0.5 MILES)**

Miniature cafe and market with a maximalist selection.  
1718 S Congress Ave.

### **C-BOY'S (0.7 MILES)**

South Austin neighborhood hotspot for soul and R&B.  
2008 S Congress Ave.

### **THE CONTINENTAL CLUB (0.2 MILES)**

South Congress dive featuring local and national musicians.  
1315 S Congress Ave.



### **HOTEL SAN JOSÉ (0.7 MILES)**

Our sister property offers weekly live music.  
1316 S Congress Ave.

### **BLUNN CREEK TRAIL (0.9 MILES)**

Connect at Little Stacy Neighborhood Park.  
1901 East Side Dr.

### **TOWN LAKE TRAIL (0.6 MILES)**

Austin's ten-mile hike and bike trail.  
Located along Lady Bird Lake

### **DAUGHTERS (0.1 MILES)**

Vintage-inspired threads for women.  
1208 S Congress Ave.

### **MAUFRAIS (0.4 MILES)**

High-end hat and apparel boutique.  
1512 S Congress Ave.

### **STAG (0.3 MILES)**

Modern and traditional men's styles.  
1423 S Congress Ave.

### **TECOVAS (0.2 MILES)**

Western-style boots for men and women.  
1333 S Congress Ave.

FOR MORE INFORMATION

[SALES@HOTELMAGDALENA.COM](mailto:SALES@HOTELMAGDALENA.COM)

